



❖ Quick Clamping Systems for tubes

OTM 2.0

Orbital Cutting Machine

Chip free cutting of thin-walled stainless steel tubes up to 2".

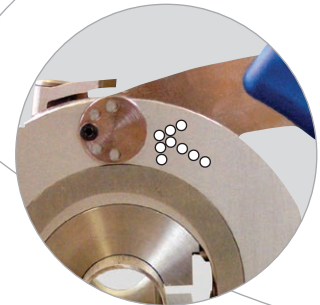
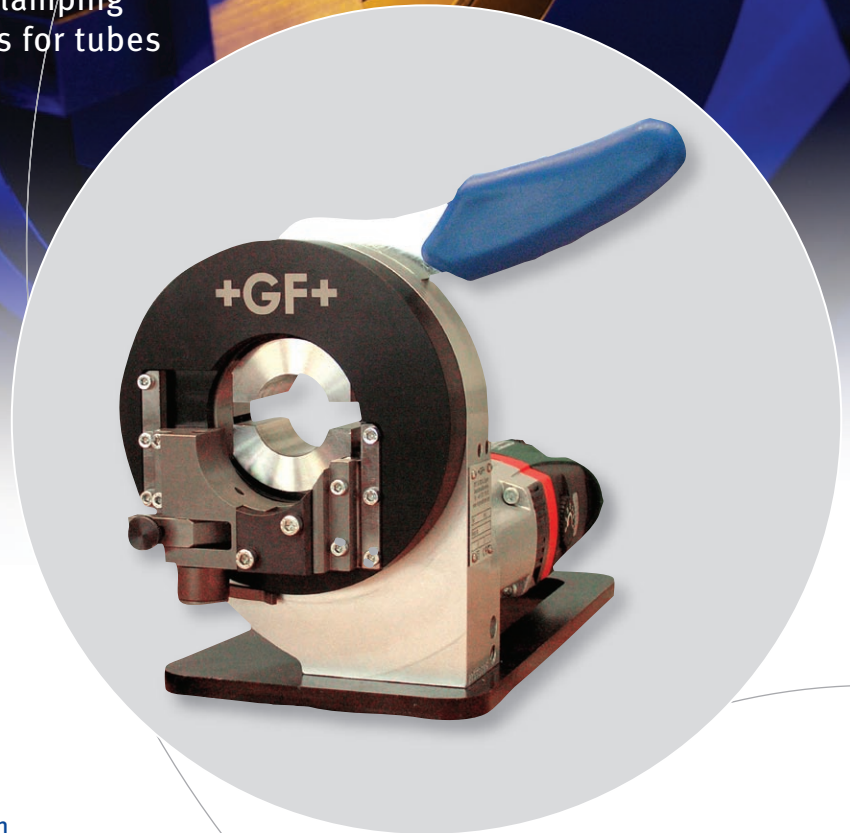
The optimal tube end preparation for welding joints conforming to industry standards.

Advantages:

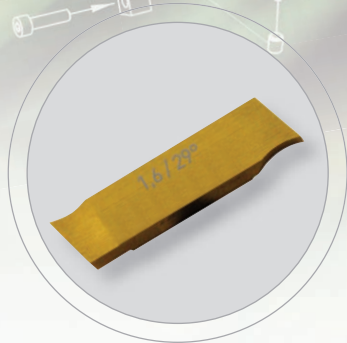
- Chip free, burr-free, square and deformation-free
- Orbital and automated cutting process
- Portable machine for a mobile and secure application
- 1 tool for different wall thicknesses (0.8 - 3 mm) and different pipe materials (only ferritic materials)
- Quick clamping system for tubes and tools and adjusting facility for compensating tube tolerances
- Built-in electronic speed regulation
- Restart protection
- Twistable / detachable drive
- Tool return to starting position is simple and does not require tools

Your benefits:

- Low initial costs
- Increased productivity
- Reduced manufacturing costs
- Mobile and secure operation, easy handling
- Clean-room suitable



❖ Adjusting facility for compensating tube tolerances



High-performance coated machine knife with two cutting edges
(Code 790 022 737)



Tool holder
(Code 790 022 736)



Clamping shells for deformation-free clamping of thin-walled tubes



The ideal solution for weld preparation: the Tube Squaring Machines **RPG**: burr-free and square

Orbital Cutting Machine OTM 2.0

Technical data / Working range

| | |
|---|---|
| Dimensions (with drive) | 13.8 x 9.8 x 8.7 inch |
| Total weight (without clamping shells) | 17.6 lbs |
| Output | 1010 W |
| Protection class | Class II, DIN VDE 0740 |
| Mains supply | 100 - 120 V, 50/60 Hz (Code 790 022 702) |
| Speed (maximum idle speed) | 24 - 42 rpm |
| Noise pressure level at the workplace | At idle approx 75 dB (A) |
| Vibration level in accordance with EN 28662, Part 1 | < 2.5 m/s ² |
| Tube OD min. - max. | 1/4 - 2 inch |
| Wall thickness min. - max. | 0.032 - 0.118 inch |
| Tube materials | High alloy steels (stainless steel material no. 1.40... - 1.45... in accordance with DIN 17 455 and DIN 17 456), non-alloy and low alloy steels, aluminum. Additional materials on request. |

The technical data are not binding. They are not warranted and characteristics are subject to change. Please consult our General Conditions of Supply.

Info-Hotline: +49 (0) 77 31 792-787 up to 789